

MODEL #
XSEBIP8MP28-B-AI+



ULTRA SERIES AI+ SPECTRAL CAMERA



8MP
RESOLUTION



8MP
Resolution

2.8MM
Lens



IR Up to
25M

See In Full Color
At Night



Two-Way
Communication

Deterrence
Lights & Siren



IP67
Waterproof &
Dustproof

Micro SD Card
Slot up to 1TB

Introducing the **XSEBIP8MP28-B-AI+**, a high-performance security camera designed to deliver reliable monitoring and clear video quality in various environments. Providing real-time video output at a maximum resolution of 3840x2160@30fps, it ensures detailed and smooth surveillance for everyday security applications. Equipped with AI-ISP technology, the camera delivers excellent noise reduction, improving image clarity in different lighting conditions. Intelligent analytics further enhances monitoring capabilities, enabling smarter and more efficient surveillance. The camera supports warm light and infrared dual supplementary lighting, allowing effective monitoring both during the day and at night. It also supports backlight compensation, strong light suppression, 3D digital noise reduction, and a 120dB wide dynamic range, making it suitable for different video environments while maintaining balanced image quality. For added functionality, the device is equipped with 1 built-in microphone and 1 built-in speaker. Built for durability, it is designed to meet IP67 dust and water resistance standards, ensuring reliable performance in both indoor and outdoor environments.

VIDEO

Image Sensor	1/1.8"
Max. Resolution	8MP 3840(H)×2160(V)@30fps
Min. Illumination	Color 0.0007lux @ F1.0(AGC ON) ; B/W 0 lux @ IR ON
Scanning System	Progressive CMOS

LENS

Focal Length	2.8 mm
Aperture	F1.0
Angular Field of View	Horizontal:110° Vertical:60° Diagonal:113°
Min. Object Distance	2.5m

OPERATIONAL

IR LED	1
Warmlight	2
Red Blue Light	2(1 Red&1 Blue)
IR Viewable Length	Up to 25m
Warm Light Viewable Length	Up to 20m
Type of complementary light	Default warm light, switchable infrared light
Motion Detection	Off/On (8 Level)
Wide Dynamic Range	WDR
Digital Noise Reduction	3D DNR
Image Setting	Full Color Mode/Day&Night Mode/Smart Illumination
White Balance	Auto/Manual
Electronic Shutter Speed	1/5 ~ 1/20000s
Edge Storage	Micro SD slot, up to 1TB
Alarm	NA
Audio	Built-in microphone&Speaker
Custom Voice	Yes
Hardware Reset	Yes
AI Feature	Face Recognition, Pedestrian & Vehicle, Perimeter Intrusion, Multi-Target-Type Recognition, Line Crossing, Object Detection, Crossing Counting, Heat Map, Crowd Density, Queue Length, License Plate, Rare Sound, Intrusion, Region Entrance, Region Exiting, Fall Detection, Fire&Smoke Detection

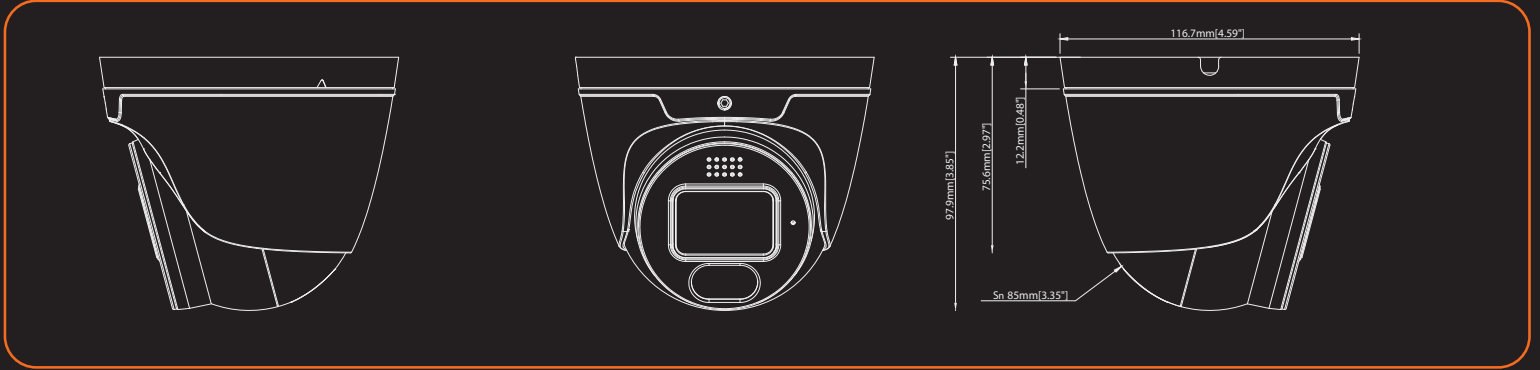
NETWORK

Ethernet	RJ45(10/100BASE-T)
Video Compression	H.265/H.264/H.265+/H.264+/MJPEG
Resolution	Mainstream@30fps 8MP(3840x2160),5MP(2592x1944,3072x1728), 4MP(2592x1520),3MP(2304x1296),1080P(1920x1080), 960P(1280*960),720P(1280x720) Substream@30fps 720P(1280x720),VGA(640x480),QVGA(320x240) Mobilestream@30fps VGA(640x480), QVGA(320x240)
Video Quality Adjustment	256Kbps ~ 8Mbps
Bitrate control method	CBR/VBR
IP	IPV6
Protocol	TCP/IP,HTTP,DHCP,DNS,DDNS,RTP/RTSP, SMTP,NTP,UPnP,SNMP,HTTPS,FTP
Security	IP address filter;complicated password; Authenticated username and password
IP Camera protocol	ONVIF(Profile S/G/T/M)
Web Viewer	IE10/11 Safari V12.1 above Firefox V.52 above Google chrome V.57 above Edge V.79 above

GENERAL

Operating Temperature	-35~+60°C/less than ≤ 90% RH
Outdoor Ready	IP67
Input Voltage / Current	DC 12V/POE
Power	TBD
Material	Metal

DIMENSIONS



COMPATIBLE ACCESSORIES

CEILING MOUNT SOLUTION



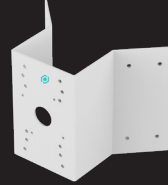
+



CMB6-G
CEILING MOUNT

EB3BASE4-G
PENDANT

CORNER MOUNT SOLUTION



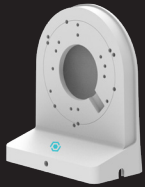
COMB6
CORNER MOUNT BRACKET

POLE MOUNT SOLUTION



PMB6
POLE MOUNT BRACKET

WALL MOUNT SOLUTION



OR



+



WMB2
WALLMOUNT BRACKET

WMB6
WALLMOUNT BRACKET

EB3BASE4-G
PENDANT

JUNCTION BOX



EB3BASE5
JUNCTION BOX

DOWNLOAD THE OV CONNECT APP

